

*Industrial Distribution  
Catalogue*



Justrite Safety Group

Safety Storage  
& Material Handling

## Steel sump pallets



**ECO 304**

MODEL	DIMENSIONS			STORAGE CAPACITY
	A	B	C	
ECO 301	860	860	425	1x200 l drum on grille
ECO 302	1340	850	330	2x200 l drums on grille or on europallet 1200x800
ECO 304	1340	1250	300	4x200 l drums on grille or on europallet 1200x1200
ECO 304H*	1340	1250	405	

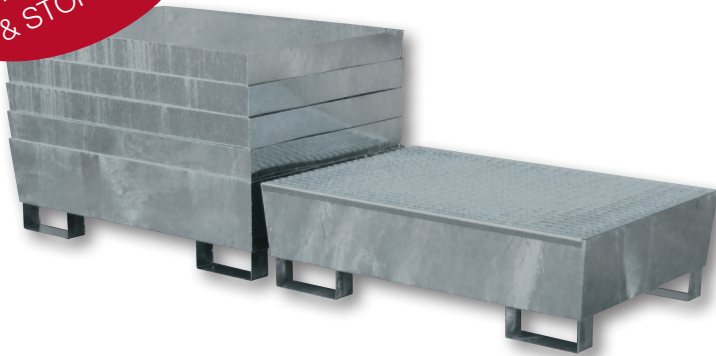
\*Capacity: 50% of the storage volume capacity

## Stackable conical sump pallets in galvanized steel



**EKON 102Z**

EASY TRANSPORT & STORAGE



MODEL	DIMENSIONS			STORAGE CAPACITY
	A	B	C	
EKON 101Z	800	800	450	1x200 l drum
EKON 102Z	1200	800	340	2x200 l drums
EKON 104Z	1200	1200	300	4x200 l drums
EKON 104ZH	1200	1200	430	

- CONICAL sumps tray for safety storage of 200 lt drums and small containers - in compliance with regulations.
- Made of hot-dip galvanized steel sheet.
- Removable hot-dip galvanized grid.
- In conformity with the European safety Standards.



THANKS TO THE CONICAL CONSTRUCTION CAN BE STACKED INSIDE EACH OTHER - WITH A GREAT REDUCTION OF THE SPACE DURING THE TRANSPORT.

## Mobile steel sumps



MODEL	DIMENSIONS			STORAGE CAPACITY
	A	B	C	
ECO 309 CR	860	860	1170	1x200 l drum directly on grille
ECO 310 CR	1340	850	1170	2x200 l drums directly on grille or on europallet 1200x800

## Galvanized supports to store drums horizontally

### MODULAR



**A**

**SPFN451Z**



**B**

**SPFN451Z**

Modular support, combining more elements it is possible to create multiple storage stations for 200 lt. drums



**C**

**SPFN453Z**

Standard fixed support for 3x60 lt. drums

MODEL	REF.	DESCRIPTION	STORAGE CAPACITY
SPFN451Z	A	Modular support	1x200 l drum
SPFN451Z*	B	Modular support	2x200 l drums
SPFN453Z	C	Standard fixed support	3x60 l drums

\*Supplied with accessory kit to join the 2 supports

- CERTIFIED CAPACITY
- GALVANIZED HIGH RESISTANCE
- FLAT PACK ON REQUEST
- EASY TRANSPORT

### STACKABLES AT FULL LOAD 1+1



**D**

**SPFN351Z**

Support for 1x200 lt. drums



**E**

**SPFN352Z**

Support for 2x200 lt. drums



**F**

**SPFN353Z**

Support for 3x60 lt. drums



**G**

**SPFN048Z**

Support for 2x200 lt. drums

MODEL	REF.	DESCRIPTION	STORAGE CAPACITY
SPFN351Z	D	Stackable support	1x200 l drum
SPFN352Z	E	Stackable support	2x200 l drums
SPFN353Z	F	Stackable support	3x60 l drums
SPFN048Z	G	Stackable support	2x200 l drums

## Outdoor storage deposits for 1t 200 drums



MODEL	DIMENSIONS				STORAGE CAPACITY
	A	B	C	D	
ECO 701	870	870	1600	970	1X200 l. drum directly on grille
ECO 702	1350	860	1570	1080	2X200 l. drums directly on grille or on europallet 1200x800
ECO 704	1350	1260	1540	1080	4X200 l. drums directly on grille or on europallet 1200x1200
ECO 704H*	1350	1260	1645	1080	

\*Capacity: 50% of the storage volume capacity

## Special outdoor storage deposits with airvents



MODEL	DIMENSIONS				STORAGE CAPACITY
	A	B	C	D	
ECO 712	1350	860	1570	1080	2X200 l. drums directly on grille or on europallet 1200x800
ECO 714	1350	1260	1540	1080	4X200 l. drums directly on grille or on pallet 1200x1200
ECO 714H	1350	1260	1645	1080	

\*Capacity: 50% of the storage volume capacity

## Galvanized outdoor storage deposits

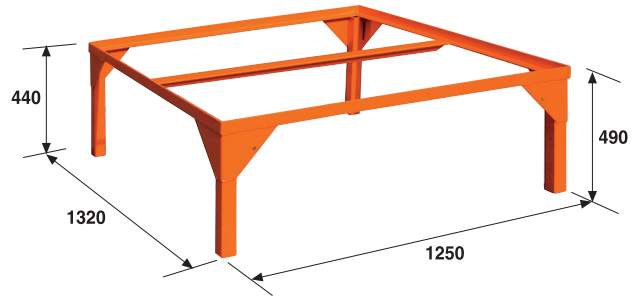


MODEL	ECO 792Z	ECO 794Z
External dimensions: W x D x H (mm)	1395x905x1600	1395x1310x1660
Internal dimensions: W x D x H (mm)	1290x1250	1290x1250
Collection Volume (l.)	209	400

## Steel sumps for storing IBC



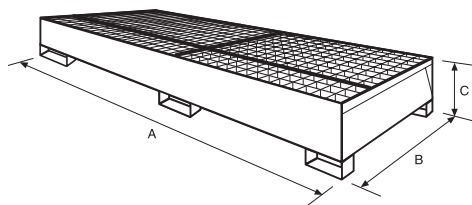
### TILTED SUPPORT



The SPC 100 support is tilted to facilitate transfer and dosing operations and ensure tank empties completely.

MODEL	DIMENSIONS			COLLECTION VOLUME
	A	B	C	
ECO 310	1340	1650	620	1.1000
SPC	1320	1250	490/440	

MODEL	DIMENSIONS			COLLECTION VOLUME
	A	B	C	
ECO 320	2720	1315	420	1.1000
ECO 321	2720	1650	350	1.1000
ECO 330	3280	1315	420	1.1200



### SPC 100

Tilted support



### ECO 320

## Outdoor storage deposits for IBC



### ECO 719BZ

This practical and functional deposit has been designed for the indoor & outdoor storage of IBCs or barrels.

#### KEY FEATURES

- Hot galvanized sheet metal sump, on demand also available overpainted, blue colour.
- Removable galvanized grid - high load capacity. Split into multiple segments to facilitate picking and the internal cleaning of the sump.
- Cover structure made of galvanized sheet steel with corrugated top.
- Lockable Door with to protect the stored materials from unauthorized personnel

MODEL	ECO 719BZ
IBC capacity	1
External dimensions: W x D x H (mm)	1405x1810x2625
INet door opening: W x D x H (mm)	1340x1900
Inner working depth (mm)	1650
ACCESSORIES	CODE
Air vent	GV 719
Tilted support model	SPC 102Z

## Flat pack modul containers



MODEL	FPMA2722PBZ
IBCs capacity	2
External Dim.: WxDxH mm	2700x2200x2385
Net door opening: WxH mm	2500x1900
Inner working depth mm	2000

**BENEFITS:**

- Easy assembling
- Reduced freight cost
- Suitable for limited access areas
- Easy handling operations

## Modul containers



MODEL	MCO 923 Z/ZB	MCO 923 ADZ/ADZB	Ramco/280Z
External dimensions: W x D x H (mm)	3150x2350x2365	*3325x2350x2365	960x1000x280
Internal dimensions: W x D x H (mm)	2940x2140x2000	2940x2140x2000	
Collection Volume (l.)	1000	1000	

Z = galvanized      ZB = galvanized and overpainted in blue      AD = explosion proof ventilation system

## Modul container with sliding doors



MODEL	MCO K12 PSZ
External dimensions: W x D x H (mm)	7230x1710x3480
Net light door opening (mm)	3450x2750
Internal depth (mm)	1340
Collection volume (Lt.)	4000
Capacity	12 IBCs
ACCESSORIES	CODE
Insulated roof	TSK 12
Grilles	GV 343

## Deposit for gas cylinders

FLAT PACK VERSION



**PBO 15 SBZ**

**BENEFITS:**

- Easy assembling
- Reduced freight cost
- Suitable for limited access areas
- Easy handling operations

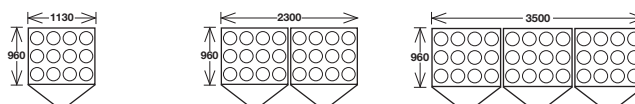


MODEL	External dimensions W x D x H (mm)	Cylinder capacity
PBO 15 SB Z without base	1550x1210x2285	1 pallet + 4 cylinders or 2 compartments each for 3 rows of 4 cylinders
PBO 15 CB Z with base	1550x1210x2450	1 pallet + 4 cylinders or 2 compartments each for 3 rows of 4 cylinders

## Deposits for gas cylinders



**PBO 011 CBZ**



MODEL	PBO 011 CBZ	PBO 023 CBZ	PBO 035 CBZ
Number of cylinders	9/12	18/24	27/36
Dimensions (mm)	960x1130x2100 H	960x2300x2100 H	960x3500x2100 H

## Steel pallet for gas cylinders handling

MODEL	Number of cylinders Ø 230 mm	External dimensions W x D x H (mm)
PBO 04Z	4	860x650x1115 H
PBO 08Z	8	860x1170x1115 H
PBO 12Z	12	1030x805x1225 H



**PBO 08Z**

## Big Bag holder with demountable structure



### STACKABLE BIG BAG PALLET

- Mesh bottom with removable uprights
- Hot-galvanised carbon steel construction
- Suitable for holding 1000-litre Big Bags (or flexible bag).

On request, as an optional, 1000-litre Big Bag is available



**SPB 120Z**

MODEL	Surface treatment	Dimensions WxDxH mm	Capacity kg	Volume litres
SPB120Z	galvanized	1070x 1070x1350	1000	-
SPB122A	orange	1000x 1000x1860	1000	208
SPB122Z	galvanized	1000x 1000x1860	1000	208
SPB122CRA	orange	1000x 1000x1998	900	208
SPB122CRZ	galvanized	1000x 1000x1998	900	208

### BIG BAG HOLDER PALLET

- Featuring a watertight safety tray for liquids with removable galvanised grid.
- Four pull-out uprights.
- Upper Big Bag holder frame that snaps into the four pull-out uprights.



**SPB 122CRA**



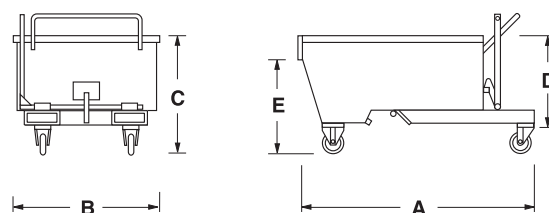
**SPB 122Z**



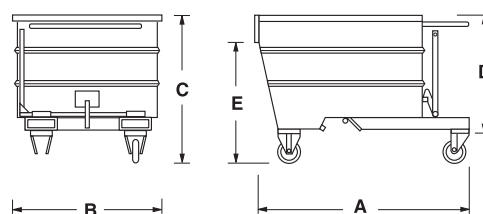
# Skips tilting containers



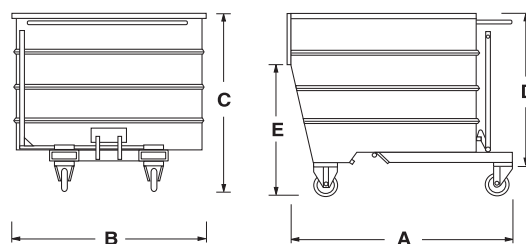
- simple and safe automatic emptying.
- equipped with watertight bin, they can be easily moved by hand into the work position thanks to four large diameter wheels (two fixed and two swivel) mounted on bearings.



MODEL	DIMENSIONS					Capacity Kg	Volume litre
	A	B	C	D	E		
LT 300	1350	820	650	490	520	600	285



MODEL	DIMENSIONS					Capacity Kg	Volume litre
	A	B	C	D	E		
LT 500	1350	920	910	700	740	1000	490
LT 750	1350	1070	1040	825	800	1350	755



MODEL	DIMENSIONS					Capacity Kg	Volume litre
	A	B	C	D	E		
LT 1000	1550	1070	1210	970	920	1700	1070
LT 1350	1550	1320	1210	970	920	2000	1320
LT 1600	1550	1550	1210	970	920	2000	1610

Openable bottom containers



SL 154 C

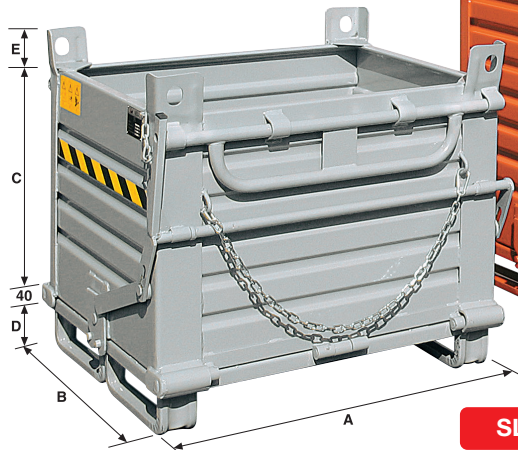
MODEL	DIMENSIONS					Capacity (Kg)
	A	B	C	D	E	
SL 154 A	1000	800	650	100	110	1300
SL 154 B	1200	1000	650	100	110	1400
SL 154 C	1500	1000	1000	100	110	1400

- Simple and safe automatic emptying.



MODEL	DIMENSIONS					Capacity (Kg)
	A	B	C	D	E	
SL 064 H650	1000	800	650	110	110	2000
SL 064 H1000	1000	800	1000	110	110	2000
SL 064 H1300	1000	800	1300	110	110	2000

2 OPENABLE BOTTOMS



SL 064 H1000

SL 064 H1300

SL 064 H650



Sall is a highly specialized Italian manufacturer since 1975. The core business includes an innovative product range, from environmental solutions, spill management, safety at work, material handling. In 2017 Sall joined the Justrite Safety Group, leading multinational company highly specialized in the manufacturing of products to protect workers, workplaces and the environment with a comprehensive range of industrial safety solutions.

#### **Prevention of accidental spills**

- Steel sump pallets
- Galvanized supports
- Outdoor storage deposits
- Modul containers

#### **Gas cylinder storage**

- Deposits for gas cylinders
- Steel pallets for gas cylinders handling

#### **Safety at work**

- Stackable big bag pallets

#### **Collection and handling of scrap and waste**

- Skips tilting containers
- Containers with openable bottoms

*To learn more about our full portfolio of products,  
please visit **sall.it***